

Asbestos Update

Zoran Sukara, Acting Team Coordinator
Asbestos and Demolition Services, Construction

Chapter 8 - Asbestos

General prohibition and exemptions

General duties

Management of asbestos and associated risks

Management of naturally occurring asbestos

Asbestos at the workplace

Demolition and refurbishment

Removal work

Removal requiring Class A Licence

Asbestos related work

Licensing

Management of asbestos and associated risks (Asbestos register)

Identify
all
asbestos
and
analyse
sample if
required



Register is
prepared,
accessible,
reviewed
and kept at
the
workplace



Information
kept up to
date



Record
date/
location/
type and
condition
of
asbestos



Or record
that no
asbestos
was
identified



NEW
Give
register
to new
PCBU

NEW

Must be
analysed by
approved
laboratory

Asbestos management plan

- Identifies the location of asbestos
- Records decisions
- Outlines procedures for incidents and emergencies
- Contains information about how to carry out work involving asbestos
- Must be maintained with up to date information and reviewed every 5 years

Control of use of certain equipment

1. The PCBU must **not allow** the use of the following on asbestos:

- High pressure water spray
- Compressed air



2. The PCBU must **control** the use of:

- Power tools
- Brooms
- Anything that causes asbestos to be released
- Must capture dust

NEW



Controlled use

Asbestos in soil



Friable asbestos in soil has to be removed by a Class A friable licensed removalist

Non friable asbestos (bonded) in soil can be cleaned up by a Class B licensed removalist

If bonded ACM has been reduced to powder, can be crumbled by hand or there are free fibre bundles detected in the soil THEN the soil is treated as having friable asbestos in soil

Management of naturally occurring asbestos

You **no longer** need a licence to work with naturally occurring asbestos

PCBU must manage risks by:

- Identifying where asbestos is located
- Developing, maintaining and reviewing AMP (asbestos management plan)
- Training workers



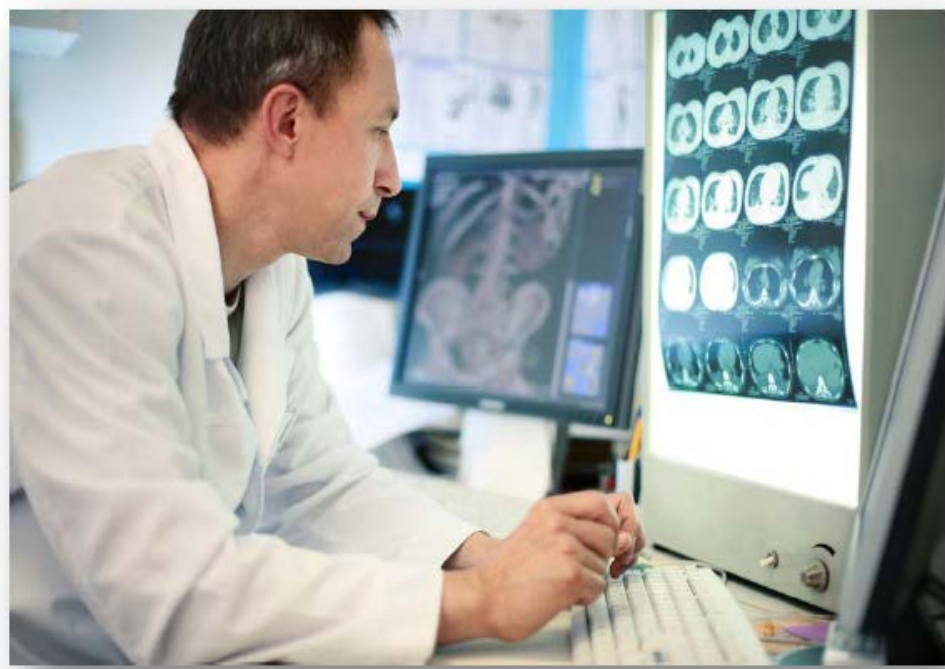


Health Monitoring

The PCBU must arrange for health monitoring for all workers who are at risk of exposure and are involved in asbestos related or asbestos removal work and must:

- Commence this before removal work is carried out
- Be carried out by a registered medical practitioner
- Bear costs
- Keep records for 40years
- Give copy to workers
- Notify WorkCover of any adverse findings

NEW



Training of asbestos removal workers

- All asbestos removal workers are to be trained
- All asbestos removal supervisors are to be trained and nominated to the regulator



Training workers

- PCBU to ensure that workers are trained
- Records to be maintained for 5 years after the worker ceases to work



Licensing of asbestos removalists

Class A

Friable asbestos

Friable licenses require a certified safety management system.

Class B

Non friable asbestos more than 10sq/m.



What is friable asbestos?

- Any material that contains asbestos in the form of a powder or can be crumbled, pulverised or reduced to powder by hand pressure when dry.
- Separate licence is required for the removal of friable asbestos.
- Non friable asbestos that has been damaged or subject to water or heat may become FRIABLE.



This is friable (Fire Damage)







Friable from water blasting

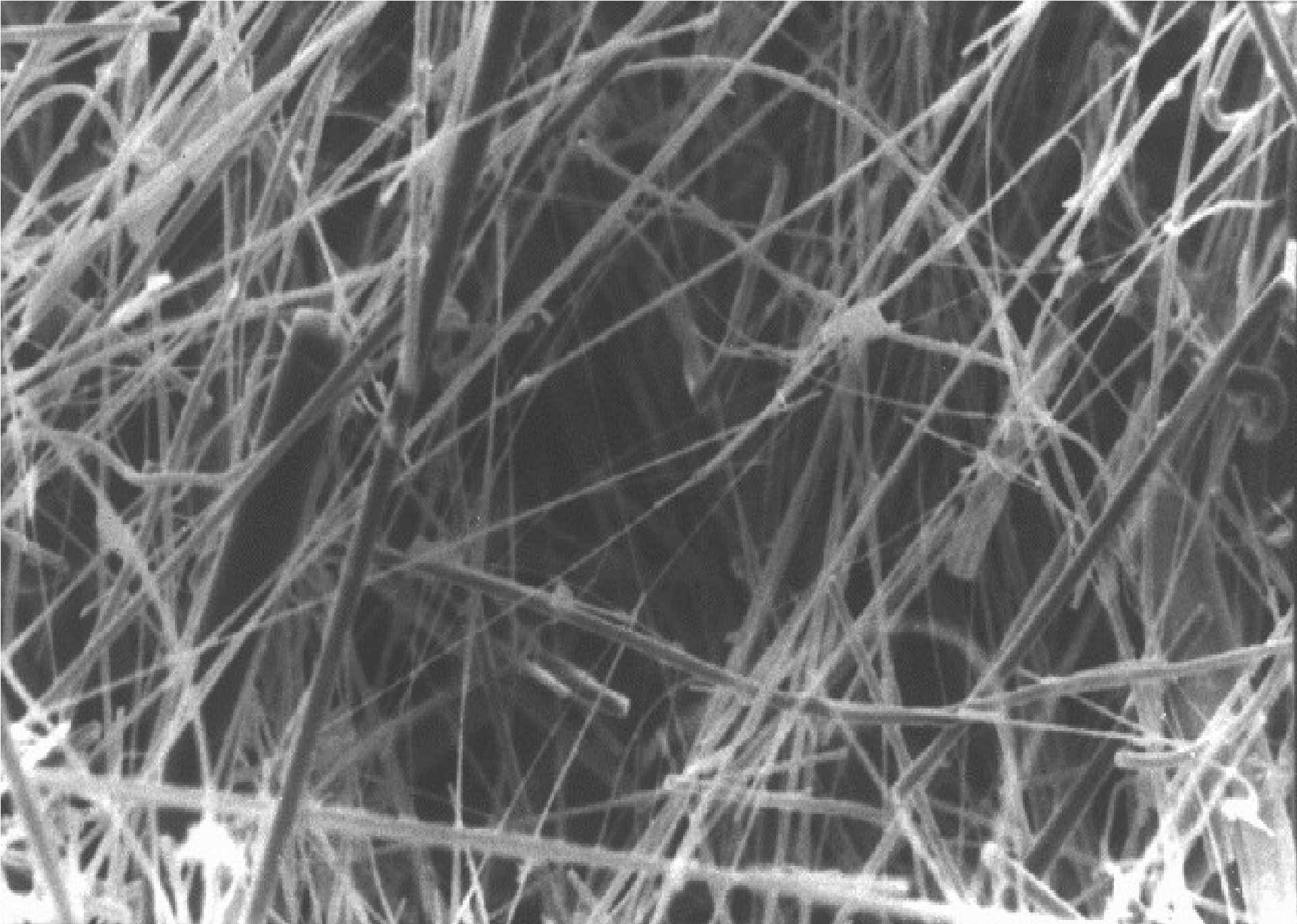




What is non-friable asbestos?

Asbestos fibres that are reinforced with a bonding compound in a base material.

Typically this is a cement type material or a plastic membrane.



20 kV

00010

30µm





Licensed asbestos assessors

- Undertake clearance inspections
- Issue written certificates
- Asbestos assessor required to carry out air monitoring and clearance of A class removals
- Assessor independent from removalist



Notification

- Notify WorkCover at least 5 days prior to licensed asbestos removal work commencing.
- Licensed asbestos removalist or the assessor are to notify Workcover of any asbestos fibre in air readings of above 0.02f/ml.

Asbestos removal supervisors

NEW

Friable asbestos supervisor present **at all times** during friable asbestos removal.

Non-friable asbestos supervisors are **readily available**.

National Codes of Practice

- How to Manage and Control Asbestos in the Workplace 2011
 - Practical guidance in the development of asbestos register
 - Asbestos management plans
 - Practical work procedures
- How to Safely Remove Asbestos 2011
 - This code of practice give guidance in the safe removal of asbestos containing materials

Transitional arrangements

- All current asbestos removal licences remain current until time of renewal when they will obtain a new licence.
- Asbestos assessors have until July 2013 to gain a licence but can provide air monitoring and certificates from 1 January 2013.
- From January to June 2013 a person is deemed to be a licensed asbestos assessor if they have appropriate qualifications, knowledge and skills.
- From January to June 2013 a person is a competent person (for non friable asbestos clearance certificates) if they have the knowledge and skills to carry out clearance inspections and issue clearance certificates.

Heads of Asbestos Coordinating Authorities (HACA)

Formed following the ombudsman's report on asbestos in NSW .

Aims and objectives :

- Ensure effective strategies for safe management of asbestos.
- Promote Identification, safe containment, removal and disposal of asbestos (including public awareness).
- Ensure cooperation between regulators to reduce duplicity.
- Provide access to accurate and consistent information on regulators responsibilities .
- Facilitate open and collaborative discussions on asbestos issues.

State Wide Plan

The state-wide asbestos plan aims to secure the safe management of asbestos to reduce the incidence of asbestos-related diseases in NSW.

Target areas:

- Research
- Risk Communication
- Prevention
- Coordination

Safety, Return to Work and Support Division

WorkCover Authority of NSW

Name: Zoran Sukara

Position title: Acting Team Coordinator

Phone: 02 8260 5769

Email: zoran.sukara@workcover.nsw.gov.au

© Copyright Safety, Return to Work and Support Division